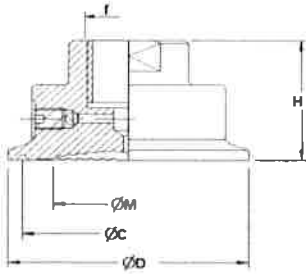


D-301



DN Clamp	C	H	D	f	M
1"	43.5	35	50.5	G 1/4 A	21
1" 1/2	43.5	35	50.5	G 1/4 A-G 1/2 A	32
2"	56.5	35	64	G 1/2 A	40
2" 1/2	70.5	35	77.5	G 1/2 A	52
3"	83.5	35	91	G 1/2 A	65

