

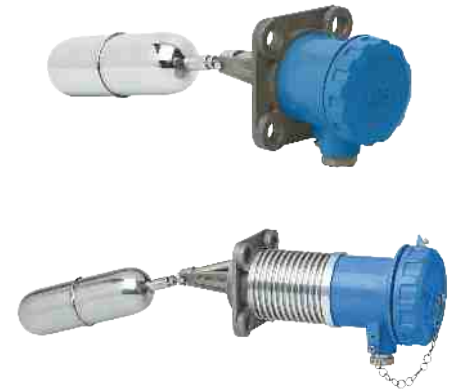
FEATURES

- Economical version
- Side or Top mounting
- Rigid & easy installation
- High temperature version
- Point level switching (HI/LO)
- Adjustable differential version

APPLICATION

- Power plants
- Chemicals process
- Water Treatment plant
- Hydro-Pneumatic Tanks

Side / Top Mounted

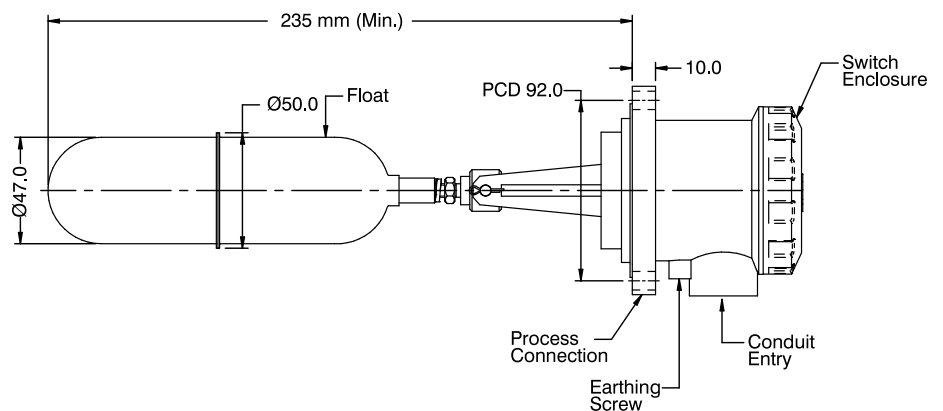


STANDARD SPECIFICATIONS

Enclosure	: Pressure die-cast Aluminum
Process connection	: Flanged / Threaded
Material of Wetted parts	: AISI 316 SS
Switch Type	: Micro switch (SPDT)
Switch Rating	: 5A / 250VAC
Switching Differential	: Fixed 30mm (max) ±5mm (Standard) : Adjustable between 40...300mm (Optional)
Mounting	: Side (Standard) / Top (Optional)
Cable entry	: 3/4" ET single compression gland
Float Diameter	: 47 mm (50 mm at welded seam)
Ingress Protection	: IP 65
Max. Operating Temperature	: Up to 120°C (Standard) : High Temperature model upto 350°C (Optional)
Max. Operating Pressure	: 20 bar
Min. Specific Gravity	: 0.6 depending up on float material and dimension
Insertion Depth	: 235 mm (Minimum)

DIMENSIONAL DRAWING

Standard Version



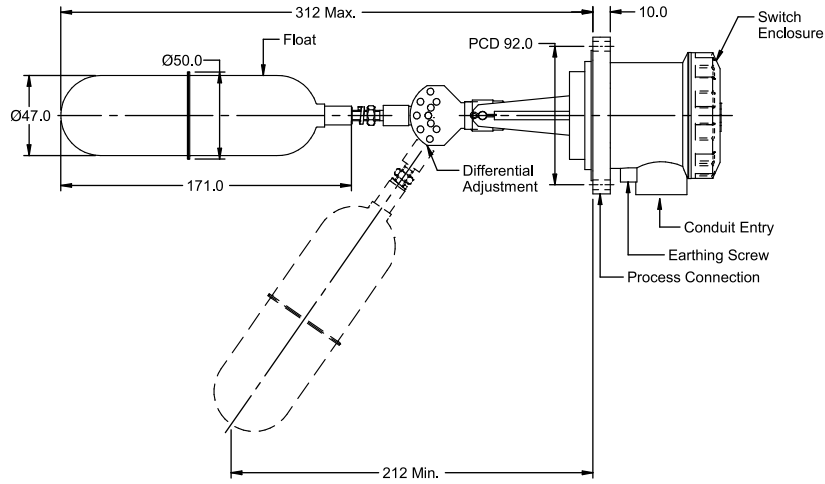
APPROVALS



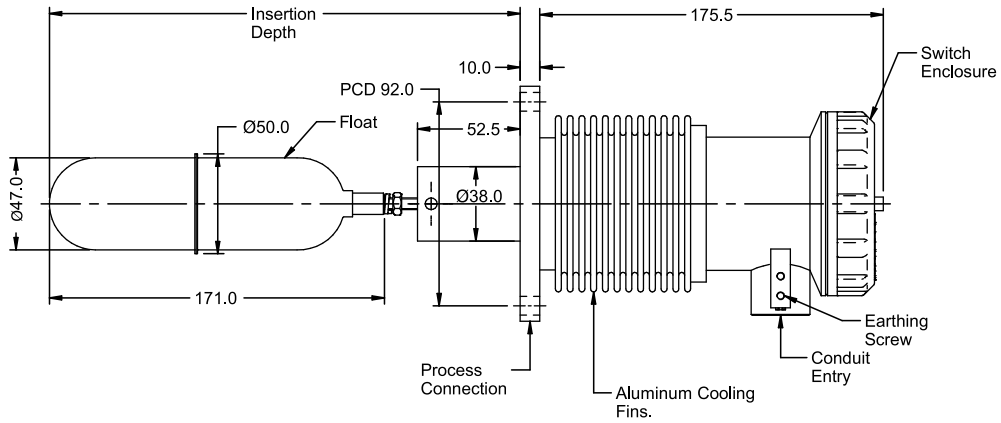
All dimensions are in mm.

DIMENSIONAL DRAWING

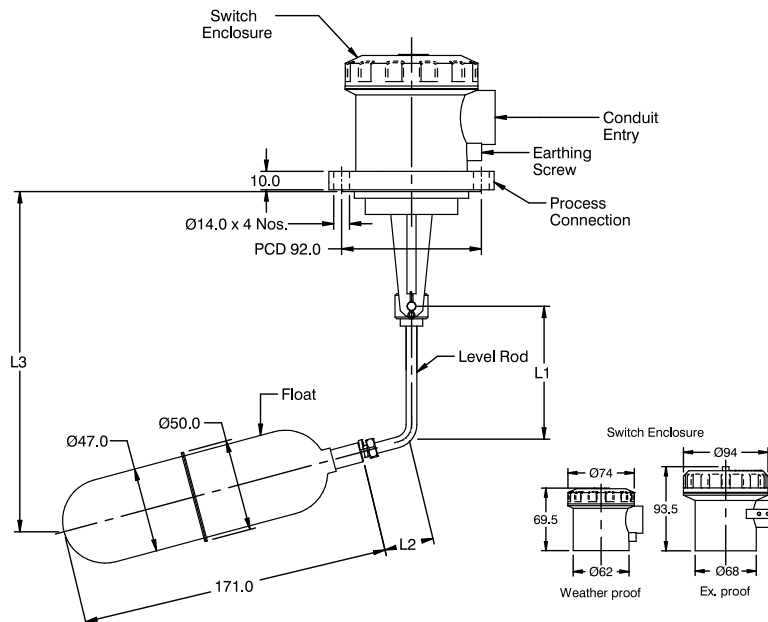
Adjustable Differential Level Switch



High Temperature (Up to 350°C)



Top Mounted Level Switch Special Application



All dimensions are in mm.

ORDERING CODES

1. BASIC MODEL

- HG** General purpose version
- HA** Adjustable differential version
- HH** High temperature version
- HP** Top mounting version

HG

2. INSERTION DEPTH

- 235** Min. 235 mm to 300 mm
- 305** Min. 305 mm to 375 mm

235

3. MICRO SWITCH TYPE

- LM1** 1 SPDT, 5A / 250VAC
- LM2** 2 SPDT, 5A / 250VAC

LM1

4. SWITCH ENCLOSURE

- BP** Watherproof, IP 65
- BQ** Flame proof, IP 67, Gr IIA, IIB
- BR** Explosion proof, IP 67, Gr IIC

BP

5. WETTED PARTS / FLOAT

- MC** AISI 316 SS (Standard)
- MF** AISI 304 SS
- M3** PVDF coated

MC

6. PROCESS CONNECTION

- E02** 92 mm PCD Square flange
- E03** 92 mm PCD Round flange
- E04** 92 mm PCD Sq. flange, forged
- E01** 61 mm PCD Round flange
- 16N** 1" NPT (M)
- 18N** 2" NPT (M)
- 16B** 1" BSP (M)
- 16B** 2" BSP (M)
- A31** 2" RF 150# as per ANSI B 16.5
- A43** 3" RF 150# as per ANSI B 16.5
- A49** 4" RF 150# as per ANSI B 16.5
- A32** 2" RF 300# as per ANSI B 16.5
- A44** 3" RF 300# as per ANSI B 16.5
- A50** 4" RF 300# as per ANSI B 16.5

E02

7. OTHER OPTIONS

- XF** Tag plate, AISI 304 SS
- TC** Material test certificate 3.1
- TP** Performance test certificate
- KE** Cable gland, double compression
Weatherproof, Ni-plated brass
- KG** Cable gland, double compression
Weatherproof, AISI 304 SS
- KK** Cable gland, double compression
Flameproof, Ni-plated brass
- KL** Cable gland, double compression
Flameproof, AISI 304 SS

XF

Ordering Example : L101-HG-235-LM1-BP-MC-E02-XF

NOTES:

1. For any special requirements, or special connections, please contact factory.